



PIONEERS IN NEUROTECHNOLOGY

MAGSTIM TMS CATALOG



2024
magstim.com



Magstim® Inc.

1626 Terrace Dr
Roseville, MN 55113
+1 844 624 7846



The Magstim® Company Ltd.

Spring Gardens, Whitland,
Carmarthenshire, UK,
SA34 0HR
+44 1994 240 798



Technomed Europe.

Amerikalaan 71
6199 AE Maastricht-Airport
The Netherlands

magstim.com
sales@magstim.com

CONTENTS.

Company Intro	4
Magstim Vision	6
TMS Stimulators	8
TMS Navigation	32
Magstim Connect	36
Magstim Analytics	38
TMS Coils	40
TMS Accessories	58



**MAGSTIM
TMS INTRO.**





With a rich history spanning four decades, Magstim has been at the forefront of innovation in neuromodulation technology.

Magstim is committed to developing advanced neurotechnology to study and treat the brain. Our technology provides neuroscience researchers and clinicians with tools to make impactful change in global healthcare.

Backed by a global team of experts with extensive knowledge and experience in neuroscience and neurostimulation, Magstim is dedicated to providing exceptional customer support and service, ensuring customers have the resources they need to accelerate research and care for future generations.

Magstim has been referenced in more than 15,000 clinical papers, highlighting its impact in the scientific community.

**MAGSTIM
VISION.**





Vision

Our vision at Magstim is to make the world a healthier and happier place through neurotechnology. Our goal is to empower researchers and clinicians to transform the way neurological and psychiatric disorders are understood and treated, ultimately improving the lives of patients worldwide.

Through ongoing research, development, and collaboration with leading experts in the field, we strive to push the boundaries of what is possible, pioneering new approaches to brain stimulation and analysis.

Together, we envision a future where our technology continues to break new ground, leading to discoveries and advancements that make a positive change for the world.

"As CEO of Magstim, I am proud to lead a company whose pioneering EEG, TMS, and multi-modal technologies are revolutionizing neuroscience research and transforming the landscape of clinical diagnostics and treatment. Our ardent commitment to innovation and excellence drives us forward as we continue to empower researchers and clinicians worldwide to improve patient lives."

- Ronnie Stolec-Campo - CEO

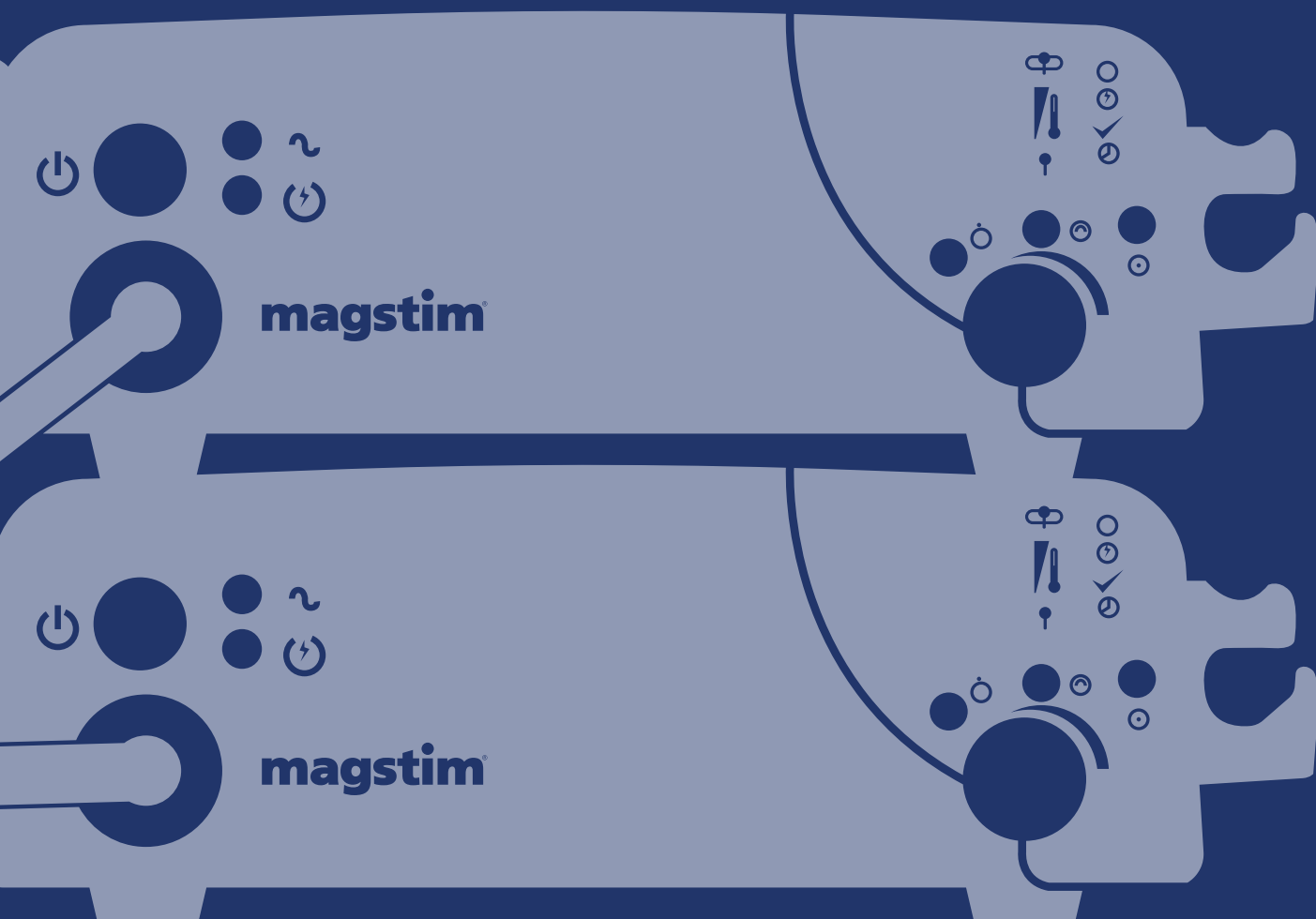
Why Partner with Magstim

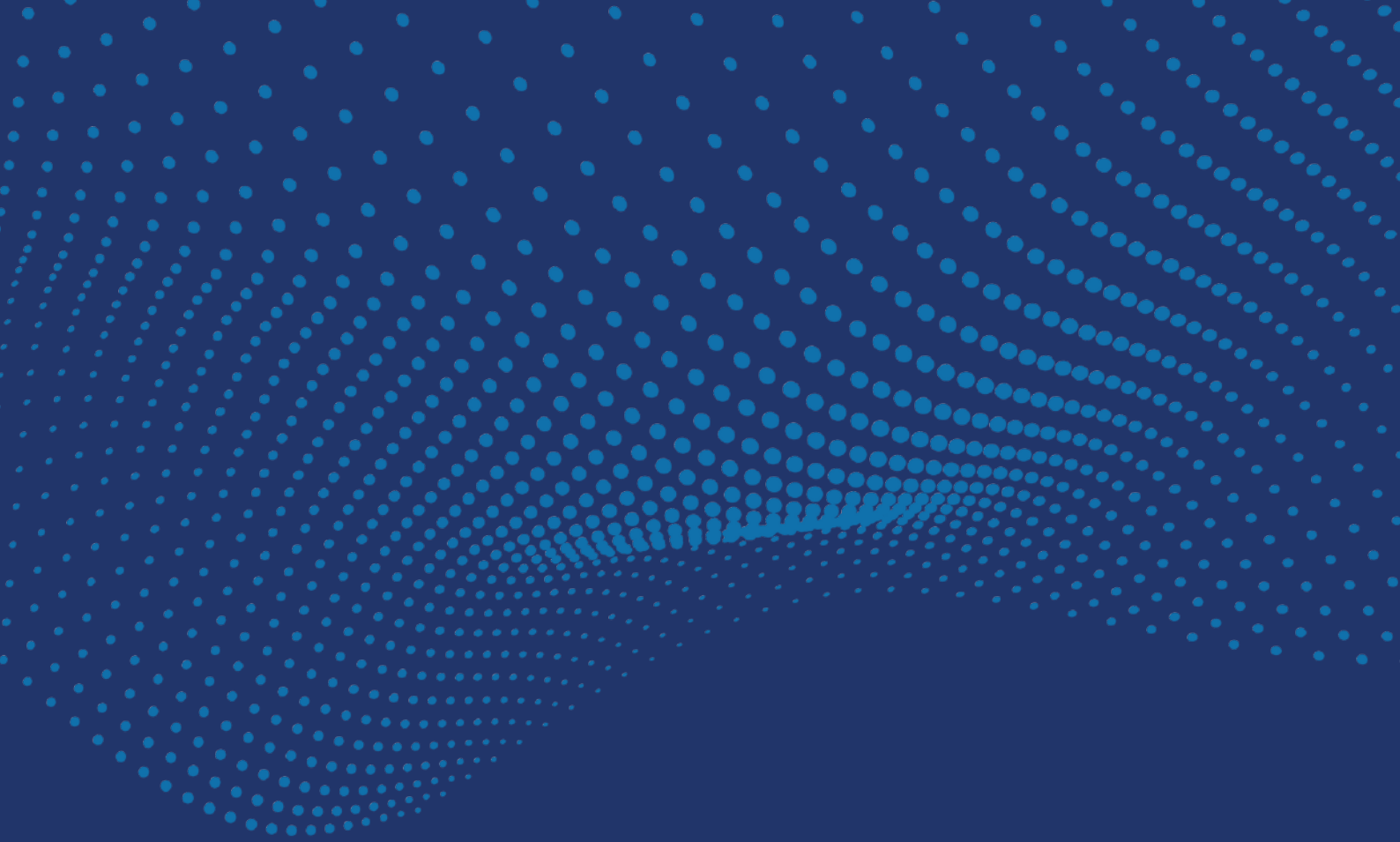
Our pioneering technologies and commitment to innovation make us the go-to choice for clinicians, researchers, and institutions.

Magstim products are designed with the latest advancements in neuroscience research, ensuring that users have access to the most advanced tools available for brain stimulation and analysis.

Magstim has a team of experts with unparalleled expertise and experience in the field of neuromodulation. Our dedicated support team is committed to providing exceptional customer service, offering guidance, training, and technical support to help users maximize the potential of our technologies.

TMS STIMULATORS.





Magstim is a renowned leader in the field of Transcranial Magnetic Stimulation (TMS) technology, offering a range of TMS solutions that are revolutionizing neuroscience research, clinical and turn-key applications.

Magstim's TMS stimulators are designed with precision and innovation and have been featured in over 15,000 clinical studies.

There are a range of stimulators available to suit your needs with systems capable of:

- TMS (Single pulse)
- TMS (Paired pulse)
- rTMS (Repetitive)
- Theta (Burst) capability
- Monophasic pulse
- Biphasic pulse

Stimulator Features Include:

- Integrated navigation
- EMC (MEP) measurement device
- Patient data management
- Sham/placebo capabilities



**TMS
RESEARCH.**



MAGSTIM M200²

Part No. 3231-00

The Magstim 200² is a reliable, simple to use stimulator capable of stimulating the central and peripheral nervous systems with a single monophasic pulse.

The Magstim 200² is designed to be compatible with a wide range of Magstim coils (see compatibility table) and is easily integrated with external triggering and recording devices using a Magstim Interface Module (see the Accessories & Consumables section).

The Magstim 200² stimulator is supplied with a 3192-00 Single 90mm remote control coil and pneumatic footswitch for triggering.

Ideal for neurodiagnostic, prognostic and cortical mapping.

Mains voltage variants:

115/230V (configurable) or 100V (Japan)



Product Name	Part No.	Pulse Type	Output Type	Maximum Frequency (Hz/ pps)	Maximum Discharge Energy ^f (J)
Magstim M200 ²	3231-00	Monophasic	Single	0.5	720
MEP (EMG)	Navigation	Horizon Adaptor Compatible	Patient Data Management	External Triggering	
Third party connectivity ^c	-	-	-		✓ ^c

^c Requires the use of 3901-00 Interface Module.

^f Maximum Discharge Energy is dependent on the system configuration and connected coil.

Magstim BiStim²

Part No. 3234-00



The Magstim BiStim² combines two 200² units through a connecting module, so that paired pulses can be delivered through a single coil.

Setting the stimulator outputs independently allows the user to deliver precise sub and supra-threshold conditioning.

The BiStim² is designed to be compatible with a wide range of Magstim coils (see compatibility table) and enables two coils to be connected for dual-site stimulation. Single and dual coil set-ups can be easily integrated with external triggering and recording devices using a Magstim Interface Module (see the Accessories & Consumables section).

Ideal for neural inhibition/facilitation investigations, and modulation of cortico-cortical connectivity.

Suitable for stimulating both the central and peripheral nervous systems.

Mains voltage variants:

115/230V (configurable) or 100V (Japan)

Already have a 3231-00 M200² Stimulator and want to upgrade to BiStim²?

Do so with a 3236-00 upgrade package (voltage variants apply).

Product Name	Part No.	Pulse Type	Output Type	Maximum Frequency (Hz/ pps)	Configurable inter-pulse timing	Maximum discharge Energy ^f (J)
Magstim BiStim ²	3234-00	Monophasic	Single, Paired Pulse	0.25	0-999ms	1163 ^P
MEP (EMG)	Navigation	Horizon Adaptor Compatible	Patient Data Management	External Triggering		
Third party connectivity ^c	-	-	-	-	✓ ^c	

^c Requires the use of 3901-00 Interface Module.

^f Maximum Discharge Energy is dependent on the system configuration and connected coil.

^P For 0ms Inter-pulse spacing.

RAPID² STIMULATORS

Magstim Rapid² stimulators have been used in numerous fundamental and clinical research studies worldwide, offering performance capabilities to meet a variety of research requirements, and compatible with a wide range of Magstim coils.

Capable of high-frequency and theta burst stimulation protocols for both cortical and peripheral research applications. Integrated display of motor evoked potentials (MEPs), with charge delay function for reduced artifacts during MEP or EEG recording. A Magstim Interface Module permits simple integration with external triggering and recording devices. The Rapid² Series stimulator comes in three variants of power capability to meet the needs of every application.

Ideal for a wide range of fundamental and clinical research applications applying neural modulation.

Suitable for both cortical and peripheral stimulation.

Voltage	Product Name	Part No.	Pulse Type	Output Type	Max Frequency (Hz/ pps)	Max Frequency at 100% Power (Hz/ pps)	System Power (kVA)	Pulse width ^{g,h} (µs)	Maximum Discharge Energy ^f (J)
230V	Rapid ²	3004-00	Biphasic	Single, Repetitive, Burst (Theta)	50	15	3	295 - 422	258
	Super Rapid ²	3005-00			100	25	6		
	Super Rapid ² Plus ¹	4100-00			100	41	9		
115V	Rapid ²	3004-US			36	11	2.3		
	Super Rapid ²	3005-US			60	22	4.6		
	Super Rapid ² Plus ¹	4100-US			60	27	6.9		



Rapid²

Part No. 3004-00

This Rapid² System features a single HV Power Supply Unit (PSU) (3KVA).

MEP (EMG)	Navigation	Horizon Adaptor Compatible	Patient Data Management	External Triggering
✓ 2 channels	-	-	-	✓ ^c



Super Rapid²

Part No. 3005-00

The Next level Rapid², with increased frequency capability and Power x frequency relationship. This Rapid² System features a Dual HV Power Supply Unit (PSU) (6KVA).

Already have a 3004-00 Rapid² Stimulator and want to upgrade to a Super Rapid² for enhanced Power x frequency capabilities?

Do so with a 3014-00 and mains lead filter (voltage variants apply).

MEP (EMG)	Navigation	Horizon Adaptor Compatible	Patient Data Management	External Triggering
✓ 2 channels	-	-	-	✓ ^c



Super Rapid² Plus¹

Part No. 4100-00

As Rapid², with increased Power x frequency relationship over the Super Rapid².

This Rapid² System features the Dual HV Power Supply Unit (PSU) from the Super Rapid² stimulator paired with the Plus¹ combining module to take the stimulators capabilities to the next level (9KVA).

Already have a 3005-00 Super Rapid² Stimulator and want to upgrade to a Super Rapid² Plus¹ for enhanced Power x frequency capabilities?

Do so with the 4101-00 upgrade package (voltage variants apply).

MEP (EMG)	Navigation	Horizon Adaptor Compatible	Patient Data Management	External Triggering
✓ 2 channels	-	-	-	✓ ^c

^c Requires the use of 3901-00 Interface Module.

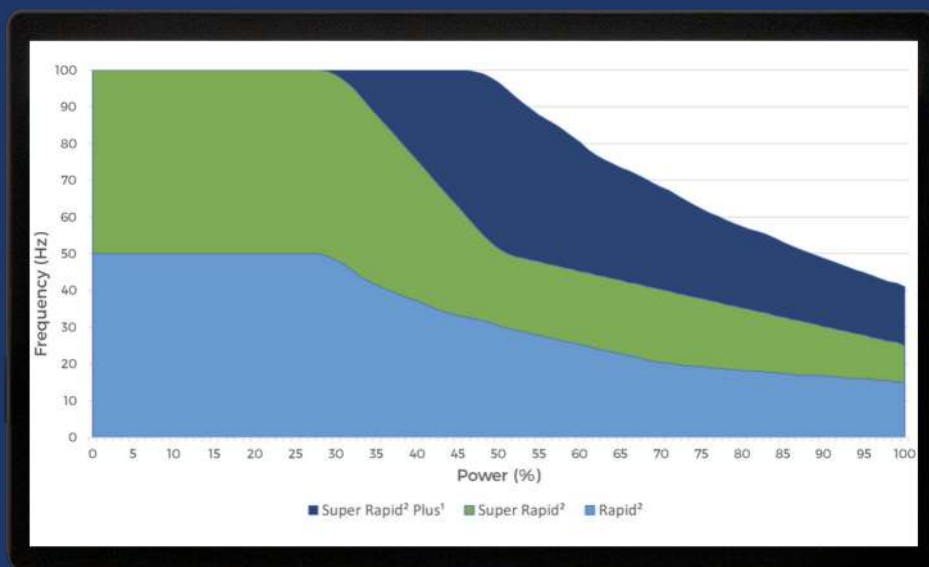
^f Maximum Discharge Energy is dependent on the system configuration and connected coil.

^g Pulse width is dependent on the connected coil.

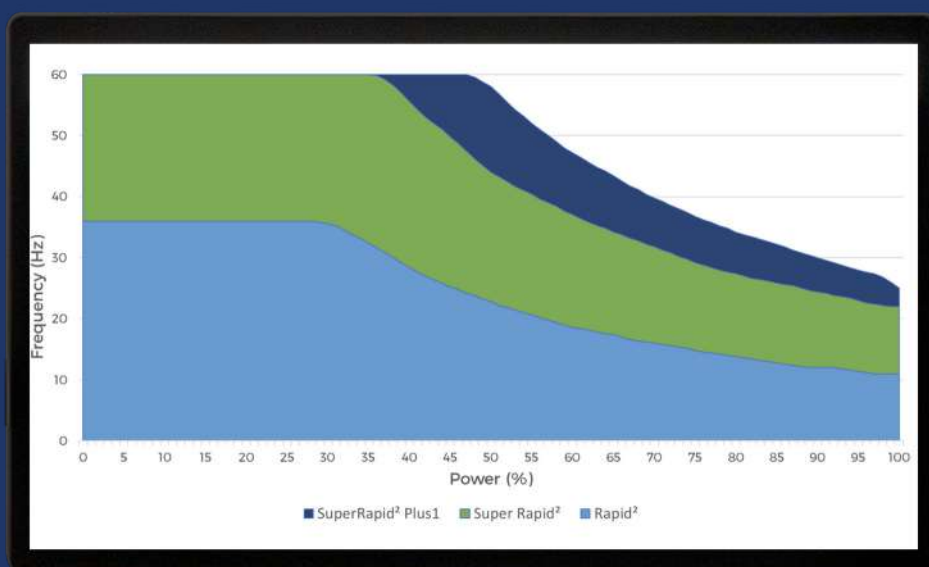
^h Typical rise time values for monophasic pulses, and pulse widths for biphasic pulses.

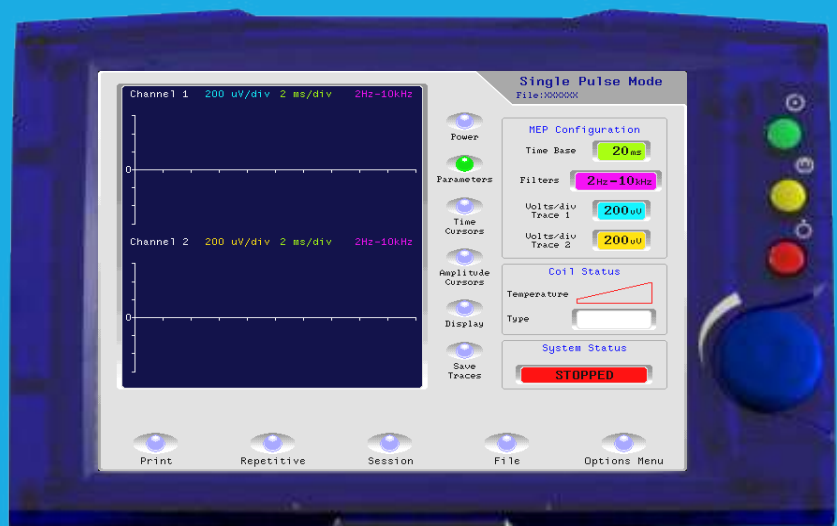
RAPID² POWER X FREQUENCY CHARTS

Rapid² Series (230V)



Rapid² Series (115V)







**TMS
CLINICAL.**



HORIZON SERIES TMS SYSTEMS

Elevate patient care and advance your practice with the Magstim Horizon range. The Horizon range has been designed with intuitive, user-friendly interfaces and treatment protocols, which provide clinicians and researchers with the flexibility to tailor stimulation parameters to individual patient needs, ensuring optimal treatment outcomes.

With options for:

- Intuitive preset clinical workflows
- Customizable treatments
- Treatment accuracy
- Advanced integrated neuronavigation
- Powerful data analytics
- Correct and consistent dosage amounts with no pulse decay
- Magstim's air-cooled coil technology eliminates downtime and extra expenses
- Consistent connected care across sites



Horizon 3.0 with StimGuide Pro

Part No. 5505-00-50



Product Name	Part No.	Pulse Type	Output Type	Maximum Frequency (Hz/ pps)	Max burst Frequency at Max Power (Hz)
Horizon 3.0 with StimGuide Pro	5505-00-50	Biphasic	Single, Re-petitive, Burst	60	50
iTBS ^e Power Capability (%)	Maximum Discharge Energy ^f (J)	Treatment coil	Pulse Width ^a	Active Cooling	Rate of change ^a
80	258	5620-00-50 Horizon 3.0 E-z Cool Coil	350µs	Dual high-power cooling Fans	19.44 KT/s
MEP (EMG)	Navigation	Horizon Sham Adaptor Compatible	Patient Data Management	External Triggering	
✓	✓	✓	✓	✓	

^a Typical Values.

^e FDA Cleared iTBS 600 protocol. 5Hz/50Hz, 3 pulses, 10 bursts, 20 cycles, cycle time of 10s, total 600 Pulses.

^f Maximum Discharge Energy is dependent on the system configuration and connected coil.

Building on the foundations of the Horizon 3.0, now with StimGuide Pro.

Navigation Overview

The best there is to offer from a clinical navigation system, where repeatability and accuracy matter the most.

The use of StimGuide Pro is designed to enhance the accuracy of coil placement during TMS sessions. This reduces the risk of off-target stimulation and ensures that the magnetic pulses are delivered to the intended brain regions, optimizing the therapeutic effects.

This is particularly crucial in TMS, where the efficacy of the treatment often depends on accurate and targeted stimulation of neural circuits associated with the patient's condition.

Clinicians can have greater confidence that the delivered TMS pulses are reaching the intended targets, leading to more consistent and predictable therapeutic results.

System features:

- Quality metrics to ensure all pulses are delivered

The software is designed to display the stimulator control, EMG and Navigation all within one application, condensing the system down to one touchscreen monitor.

Features include:

- Visual approximation of all 10/20 electrode positions.
- Four points of anatomical registration for improved accuracy of the size of the patient's head
- Anatomical Landmark registration check.
(Visibility of the pointer tool on screen after registering landmarks).
- Advanced on-screen visualization of the Pointer tool (full scale) and Coils (1/3 Scale).
- Gimbal navigation aid for rotation and tilt movements.
- Navigation by coordinate input.

New Tracking Camera with an increased viewing volume.

- Typical positional accuracy of the Navigation Camera: $\leq \pm 0.2$ mm.
- Typical rotational accuracy of the Navigation Camera: $\leq \pm 0.1^\circ$.

All new Navigation Tracker Tools, featuring four points of reference each, allow for more accurate positioning of the coils.

Remote Pointer Tool allowing complete freedom for anatomical landmark registrations.

Fully integrated with Magstim Connect and Analytics, allowing the navigation data to be saved and recalled from any Horizon 3.0 StimGuide Pro within the installation's organization. See our section on Magstim Connect for more information.

Horizon 3.0

Part No. 5795-00-50

Introducing Horizon 3.0, the cutting-edge TMS device designed to revolutionize clinical treatment for conditions such as Major Depressive Disorder and OCD. This device has also received prior clearance for Comorbid Anxiety under K223154 FDA.

Developed by Magstim, a pioneer with 30 years of expertise in TMS technology, Horizon 3.0 combines innovation, reliability, and efficiency to deliver optimal patient outcomes.



Product Name	Part No.	Pulse Type	Output Type	Maximum Frequency (Hz/ pps)	Max burst Frequency at Max Power (Hz)
Horizon 3.0	5795-00-50	Biphasic	Single, Re-petitive, Burst	60	50
iTBS ^e Power Capability (%)	Maximum Discharge Energy ^f (J)	Treatment coil	Pulse Width ^a	Active Cooling	Rate of change ^a
80	258	5620-00-50 Horizon 3.0 E-z Cool Coil	350µs	Dual high-power cooling Fans	19.44 KT/s
MEP (EMG)	Navigation	Horizon Sham Adaptor Compatible	Patient Data Management	External Triggering	
✓	-	✓	✓	✓	

^a Typical Values.

^e FDA Cleared iTBS 600 protocol. 5Hz/50Hz, 3 pulses, 10 bursts, 20 cycles, cycle time of 10s, total 600 Pulses.

^f Maximum Discharge Energy is dependent on the system configuration and connected coil.

^l 23°C recommended ambient room temperature.

Horizon 3.0 E-z Cool Coil

High-performance air-cooled treatment coil designed for back-to-back treatments in environments up to 30°C ambient temperature.

Horizon 3.0 Stimulator

Leveraging Magstim's three decades of TMS knowledge, the Horizon Stimulator is a renowned and established device known for its reliability and effectiveness. Now with a user interface software workflow designed specifically for clinical TMS, a full HD 21.5" display, and integrated EMG measurement device.

Magstim Connect & Analytics.

Cloud-connected Patient Data Management System designed to facilitate seamless connectivity across multiple sites. See our section on Magstim Connect and Magstim Analytics for more information.

Motor Threshold Coil

Handheld coil with remote stimulator control functionality, providing clinicians with enhanced flexibility while undertaking MT assessments.

Treatment Chair

Electronically actuated devices are designed to allow movement for optimal patient comfort and stability during treatment.

A specially designed headrest minimizes patient movement without compromising patient comfort, ensuring the head remains securely in place for precise TMS application.

The **Horizon 3.0 Cart** features a coil holder and weightless counterbalance, allowing smooth movement and easy positioning of the coil during treatments.

Benefits for Clinicians

- State-of-the-art technology backed by Magstim's legacy of innovation.
- Streamlined treatment with an optimized software workflow.
- Enhanced patient data management and connectivity through Magstim Connect.

Benefits for Patients

- Comfortable and stable treatment experience with the electronically actuated Treatment Chair.
- Precise and personalized treatment plans based on Motor Threshold assessment.
- Cutting-edge technology for improved treatment outcomes and overall well-being.
- A more comfortable pulse width. Shorter pulse widths can cause increased discomfort.

In conclusion, Horizon 3.0 represents the next frontier in TMS technology, offering a comprehensive solution for clinicians seeking advanced, reliable, and patient-centric treatment options. Elevate your practice with Horizon 3.0, where innovation meets experience for optimal clinical outcomes.

For 115V installations, contact Magstim.

Also available without the treatment chair.

Horizon Inspire

Part No. 6250-00



Product Name	Part No.	Pulse Type	Output Type	Maximum Frequency (Hz/ pps)	Max burst Frequency at Max Power (Hz)
Horizon Inspire	6250-00	Biphasic	Single, Repetitive, Burst	60	50
iTBS ^a Power Capability (%)	Maximum Discharge Energy ^f (J)	Treatment coil	Pulse Width ^a	Active Cooling	Rate of change ^a
80	258	4980-00 Horizon Air Film Coil	300µs (Nominal)	Single cooling Fan	25 KT/s
MEP (EMG)	Navigation	Horizon Sham Adaptor Compatible	Patient Data Management	External Triggering	
1 Channel	-	✓	✓	✓	

^a Typical Values.

^e FDA Approved iTBS 600 protocol. 5Hz/50Hz, 3 pulses, 10 bursts, 20 cycles, cycle time of 10s, total 600 Pulses.

^f Maximum Discharge Energy is dependent on the system configuration and connected coil.

The Horizon Inspire is a user-friendly, cost-effective TMS system with no pay-per-use plans. Its compact design allows for easy maneuverability between clinic rooms, making it a convenient choice for busy practices.

Horizon Inspire Benefits:

- Cost effective & user friendly
- No pay-per-use plans
- Perfect for first time TMS users or experienced TMS users
- Intuitive preset clinical workflow
- High-powered air-cooled technology, for back-to-back treatments
- Compact design for portability
- Powerful data analytics

This package features the Horizon Inspire Stimulator, Horizon MT remote coil, Horizon Air Film Coil, and a lightweight, small footprint cart.

- Enhanced Burst Capability
- Highly Durable Coil Connector
- Optimized MT coil for Motor Threshold Mapping
- Patient Data Management
- MEP (EMG) Functionality
- External Triggering

Available with or without the Treatment Chair.

Horizon Lite

Part No. 5410-00



Product Name	Part No.	Pulse Type	Output Type	Maximum Frequency (Hz/ pps)	Max burst Frequency at Max Power (Hz)
Horizon Lite	5410-00	Biphasic	Single, Repetitive, Burst	60	50
iTBS ^e Power Capability (%)	Maximum Discharge Energy ^f (J)	Treatment coil	Pulse Width ^a	Active Cooling	Rate of change ^a
67	258	4980-00 Horizon Air Film Coil	300µs	Single cooling Fan	25 KT/s
MEP (EMG)	Navigation	Horizon Sham Adaptor Compatible	Patient Data Management	External Triggering	
-	-	✓	-	-	

^a Typical Values.

^e FDA Approved iTBS 600 protocol. 5Hz/50Hz, 3 pulses, 10 bursts, 20 cycles, cycle time of 10s, total 600 Pulses.

^f Maximum Discharge Energy is dependent on the system configuration and connected coil.

The Horizon Lite is a cost-effective option with a compact footprint, which is beneficial for smaller and startup clinics.

This package features the Horizon Stimulator, Horizon MT remote coil, Horizon Air Film Coil, and a lightweight, small footprint cart.

The Horizon System is derived from the highly successful Rapid² System, with optimizations designed for the clinical environment.

- Enhanced Burst Capability
- Highly Durable Coil Connector
- Optimized MT coil for Motor Threshold Mapping.

Optimized for comfort, the bespoke treatment chair ensures patient comfort and provides reassurance that the treatment is administered on target as intended (see the Compatible Accessories & Consumables section for more details).

Available Without the Treatment Chair – Part No. 5415-00

For 115V installations, contact Magstim Customer Service.

STIMULATOR UPGRADE PACKAGES

See the Accessories & Consumables section for more details on listed items.

5570-00

Air Film Coil (AFC) package with Cart

Coil Packages

- 3910-00 Double 70mm Air Film Coil (AFC)
- 5420-00 Stimulator Cart with Cart Mounted Coil Arm

5565-00

Air Film Coil (AFC) Package with Sham Coil and Cart

Coil Packages

- 3910-00 Double 70mm Air Film Coil (AFC)
- 3950-00 Double 70mm Air Film Coil (AFC)
- 5420-00 Stimulator Cart with Cart Mounted Coil Arm

Rapid² to Super Rapid² Upgrade Package

Rapid² Upgrade Packages

- 3014-00 Dual HV PSU (Voltage specific)
- Mains lead filter (territory specific)

4101-00

Super Rapid² to Plus¹ Upgrade Package

Rapid² Upgrade Packages

- 4040-00 Plus¹ Module (Voltage specific)
- Mains lead filter (territory specific).
- 600002 IEC Jumper Cord.
- 3583-00 PSU to Stimulator Interconnecting leads, x 2.

STIMULATOR COMPARISON GRID

	Magstim Series					Horizon Series				
	TMS		rTMS			Clinical TMS				
	M200 ²	BiStim ²	Rapid ²	Super Rapid ²	Super Rapid ² Plus ¹	Horizon Lite	Horizon Inspire	Horizon Performance	Horizon 3.0	Horizon 3.0 StimGuide
Monophasic	✓	✓	-	-	-	-	-	-	-	-
Biphasic	-	-	✓	✓	✓	✓	✓	✓	✓	✓
Paired Pulse	-	✓	-	-	-	-	-	-	-	-
Pulse width ^{g, h} (µs)	84 – 106	111 - 146	295 - 422	295 - 422	295 - 422	300	300	350	350	350
Frequency Capability (Pulse Per Second)	0.5	0.25	50 b	100 b	100 b	60	60	60	60	60
Burst (Theta)	-	-	✓	✓	✓	✓	✓	✓	✓	✓
Power (kVA), 115V	2	4	2.3	4.6	6.9	-	-	-	-	-
Power (kVA), 230V	2	4	3	6	9	3	3	3	3	3
Integrated MEP (EMG)	-	-	2 Channel	2 Channel	2 Channel	-	1 Channel	-	1 Channel	1 Channel
Integrated Navigation	-	-	-	-	-	-	-	-	-	✓
Horizon Sham Adaptor Compatible	-	-	-	-	-	✓	✓	✓	✓	✓
Patient Data Management	-	-	-	-	-	-	✓	-	✓	✓
External Triggering	✓ ^c	✓ ^c	✓ ^c	✓ ^c	✓ ^c	-	✓	-	✓	✓
FDA Cleared ^d	✓	-	✓	✓	-	✓	✓	✓	✓	✓
CE Marked ^d	✓	✓	✓	✓	✓	✓	-	✓	-	-
UKCA Marked ^d	✓	✓	✓	✓	✓	✓	-	✓	✓	✓

^b Maximum frequencies given are for 230V systems where both 115V and 230V variants are available. See the 'Rapid² Power x Frequency Charts' for Rapid² performance comparisons.

^c Requires the use of 3901-00 Interface Module.

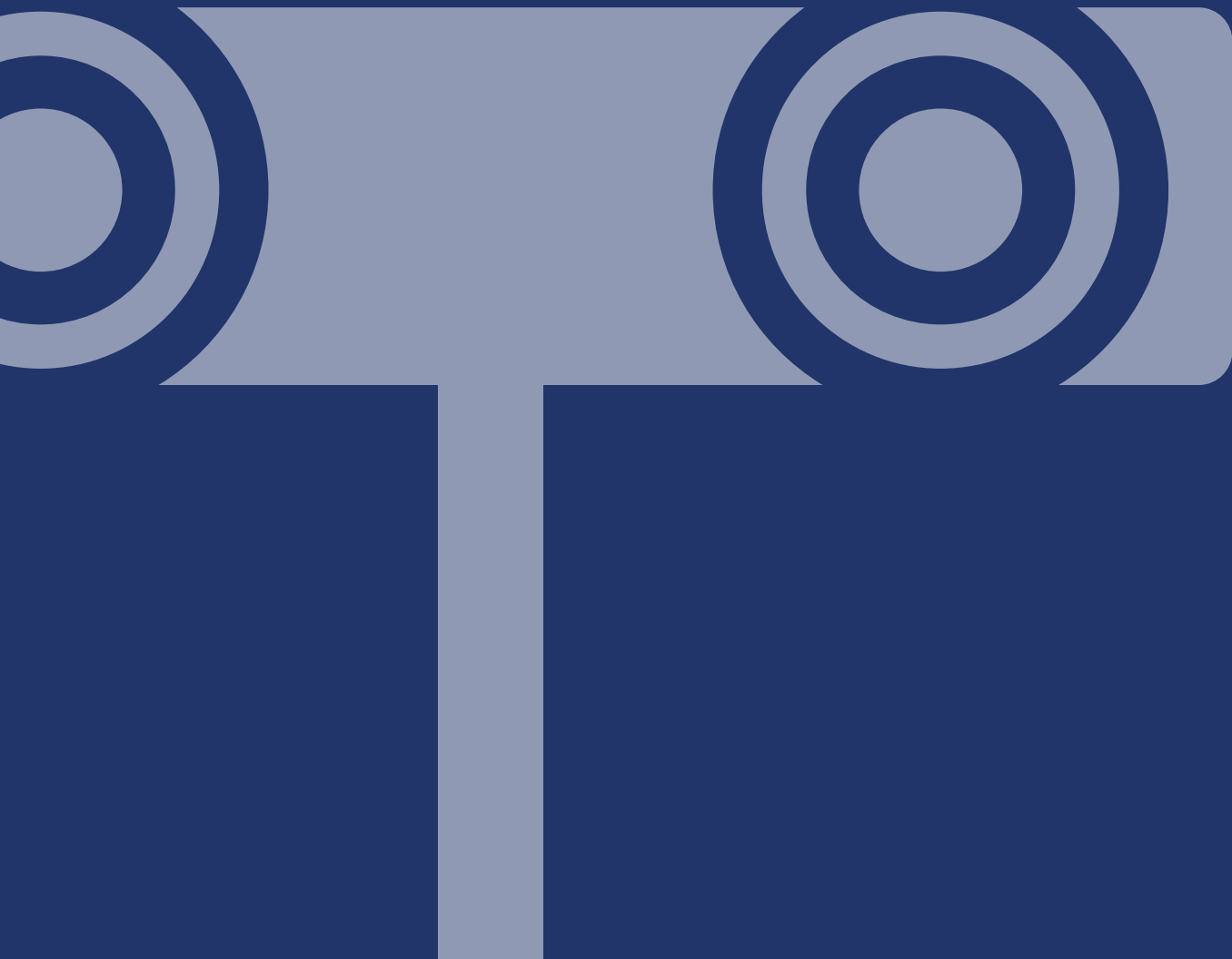
^d Regulatory approvals may have limitations of use within their respective approval.

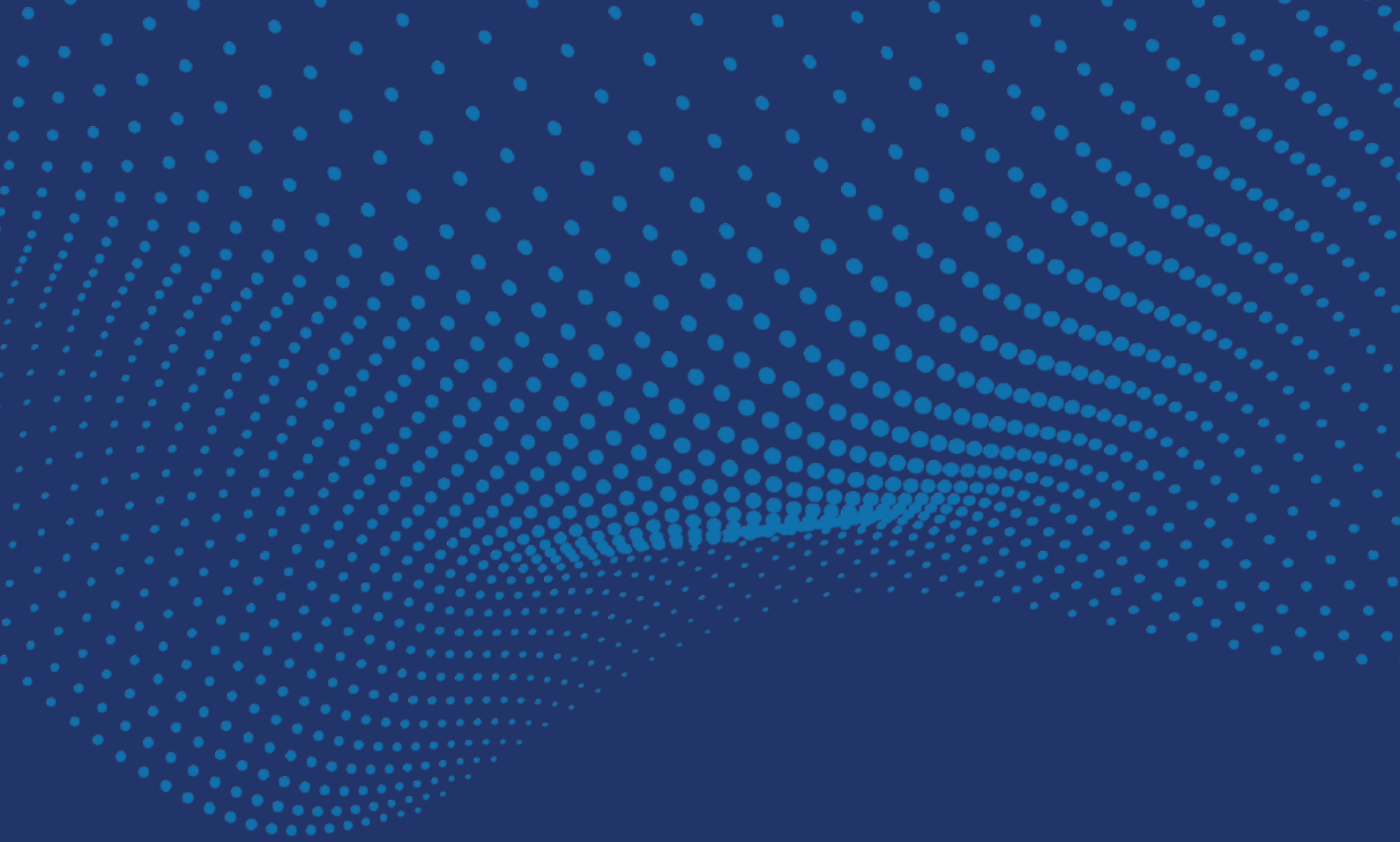
^g Pulse width is dependent on the connected coil.

^h Typical rise time values for monophasic pulses, and pulse widths for biphasic pulses.



**NAVIGATION
INTRO.**






Pioneers in integrated TMS Navigation, Magstim has developed Horizon 3.0 with StimGuide Pro for neuronavigation where repeatability and accuracy matter the most.

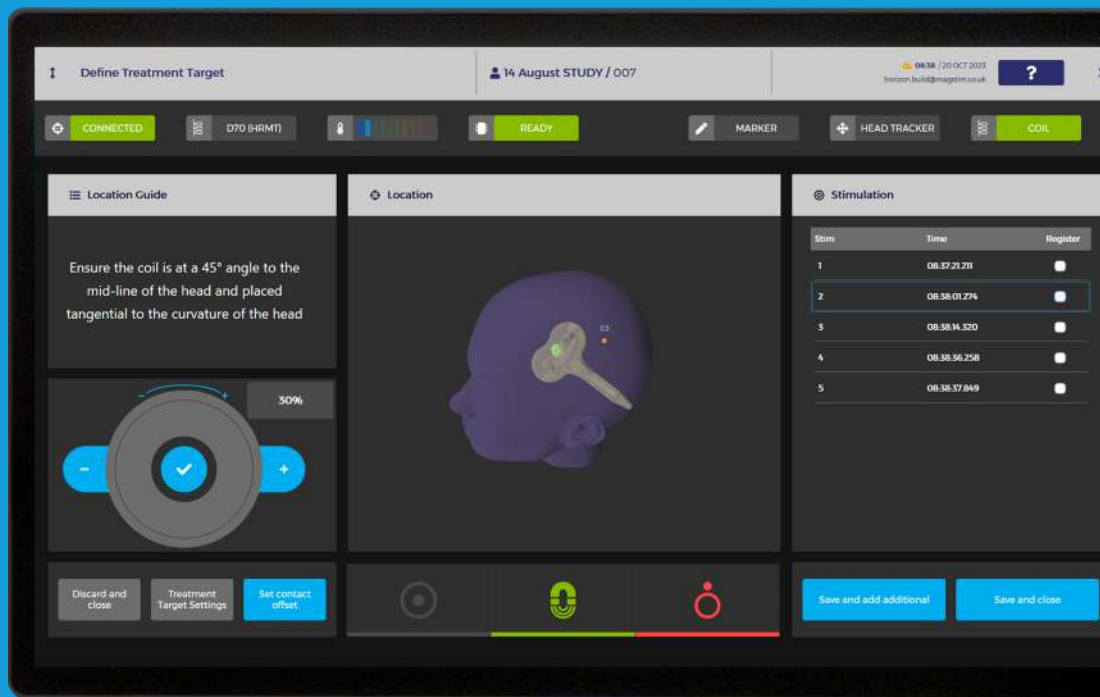
The use of StimGuide Pro is designed to enhance the accuracy of coil placement during TMS treatment sessions. This reduces the risk of off-target stimulation and ensures that the magnetic pulses are delivered to the intended brain regions, optimizing the therapeutic effects.

This is particularly crucial in TMS, where the efficacy of the treatment often depends on accurate and targeted stimulation of neural circuits associated with the patient's condition.

Ultimately, the precision and repeatability afforded by TMS Navigation technology could contribute to improved treatment outcomes. Clinicians can have greater confidence that the delivered TMS pulses are reaching the intended targets, leading to more consistent and predictable therapeutic results.

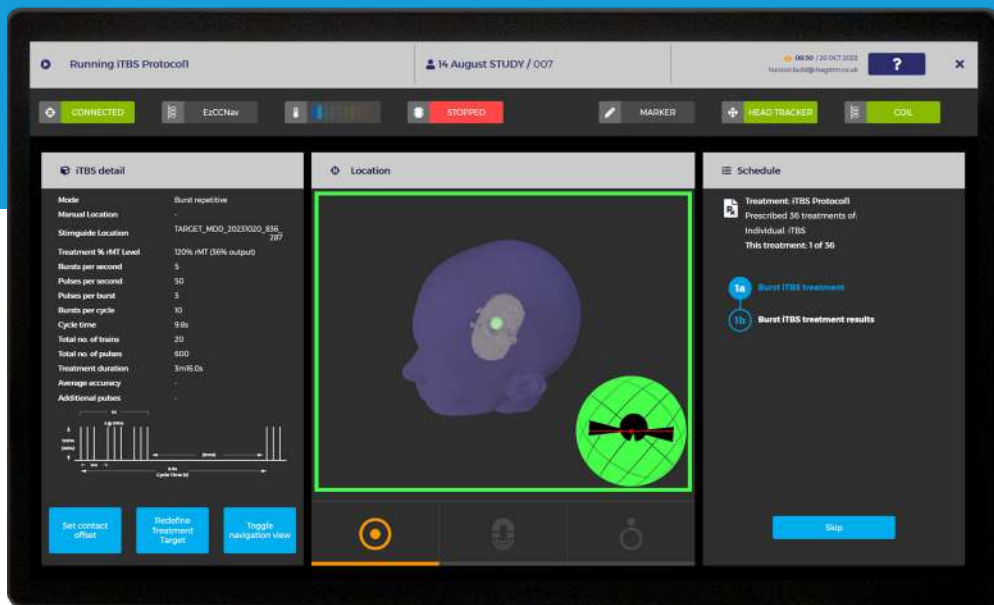


**HORIZON 3.0
STIM GUIDE PRO
NAVIGATION.**



Designed to improve coil positioning, where repeatability and accuracy matter the most.

- New camera for improved accuracy.
- Improved navigation workflow.
- Reduces the risk of off-target stimulation for consistent results.
- New bluetooth anatomical pointer tool for improved user experience.



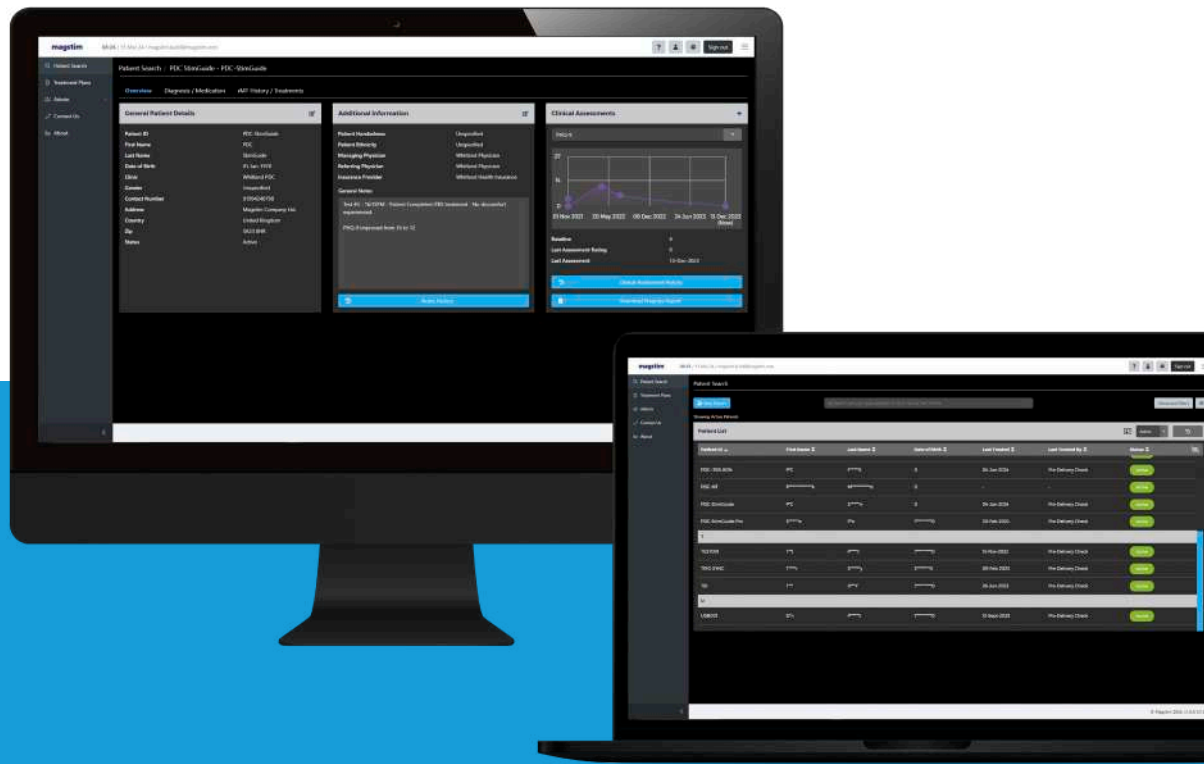
SCAN TO WATCH VIDEO





MAGSTIM CONNECT.

Magstim Connect is designed to enable multiple compatible TMS therapy systems to be managed from one central system. This allows treatment templates, patient records, and treatment history to be securely shared between treaters and treatment sites. Magstim Connect will also send depression scoring questionnaires to patients and provide a score for the patient to the clinician based on existing clinical rating scales. The system is designed to accommodate multiple networked sites where patients may be treated at more than one clinical site.



- Patient data is synchronized across your Horizon 3.0 systems and web application.
- Create treatment plan templates from your workstation.
- Manage patients and assign treatment plans.
- Issue clinical self-assessment questionnaires.
- Assign treatment scores to patients post treatment E.g., Y-BOCS, PHQ-9, GAD-7 etc.
- Track and manage:
 - Clinics within the organization
 - Patient details
 - User/Treaters
 - Management of Referring physicians
 - Insurance providers
 - Clinical assessment history
 - Treatment history
 - Medical diagnosis
 - Diagnosis notes
 - Medication notes
 - Download Treatment Progress report form in pdf format



† Horizon 3.0 systems



MAGSTIM ANALYTICS.

Magstim Analytics collects metric data across patients, clinicians delivering therapy, specific clinics, and TMS devices. The software is not intended for diagnosis of any conditions or to make clinical judgements. It is for organization of data.

Magstim Analytics is designed to streamline the management of multiple systems in an installations organization. With a web access portal, Magstim Analytics is accessible on multiple devices, including laptops, PC's, and mobile devices.

Features include:

Patient, Treater, and Clinic Analytics.

- o Motor threshold (MT) levels
 - Configurable based averages including patients by demographic
 - Visualization of analytics
- o Clinical assessment progress
 - Configurable averages
 - Visualization of progress
 - Improvement percentages over a treatment plan
 - Normalization of various scoring scale progression
 - Not intended for diagnosis of any condition
- o Treatment accuracy
 - Configurable averages.
 - Visualization of accuracy
 - Comparison of accuracy against averages
- o Protocol history
 - See full parameter sets used for protocol delivery
 - See any notes made during treatment
 - See any changes made to power or positioning made during treatment



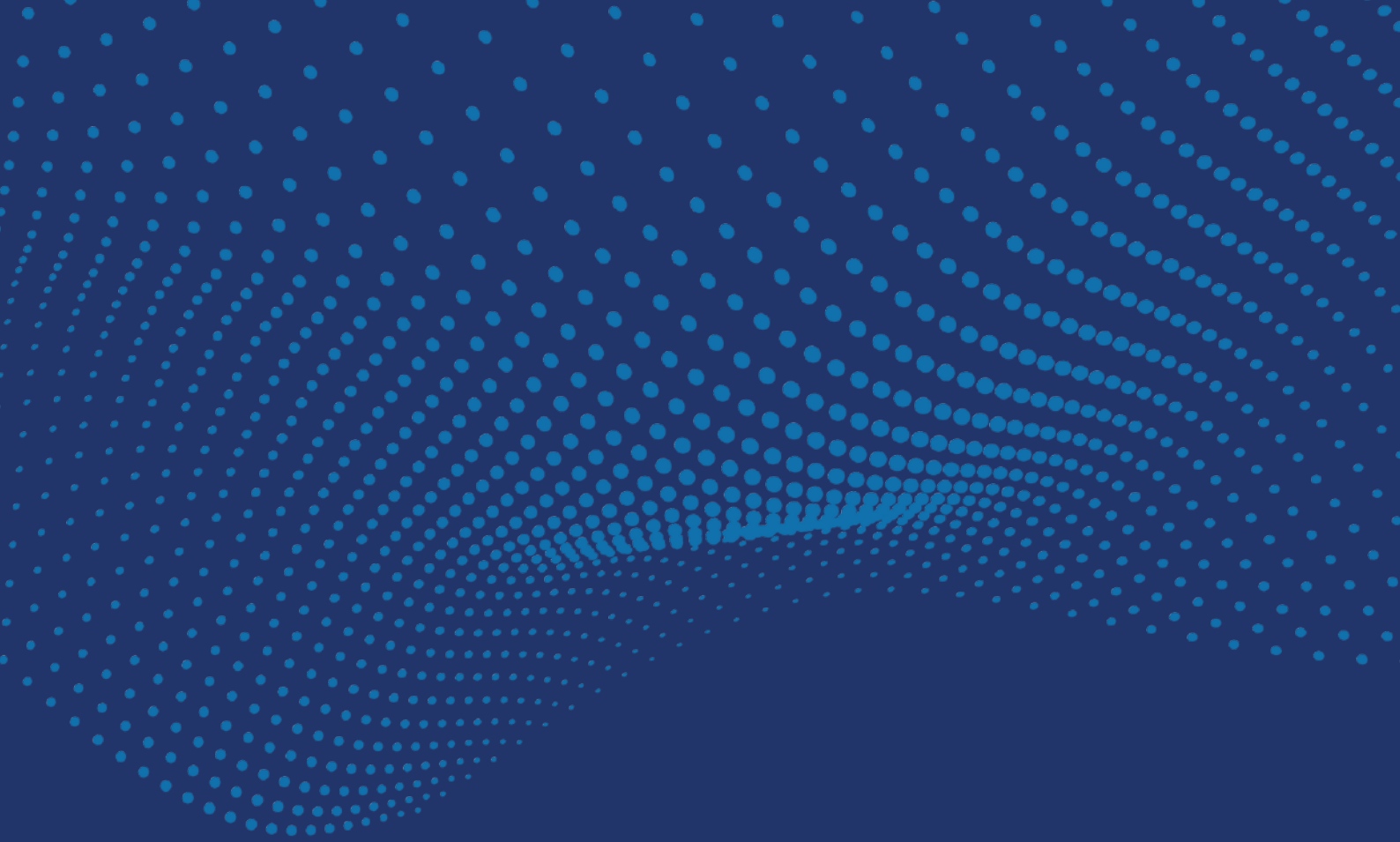
Device Analytics

- o MT Levels
- o Treatment accuracy
- o Protocol History
- o Event Log & Audit trail
 - Highlights any events of changes made on the device e.g., settings and network activity etc.
 - Software versions and update history
- o Device lifetime management
 - EPV levels
 - HCI Levels
 - Service Dates
 - Highlight Devices which are close to or over limit.
 - Sends automated E-mails to the Device Administrator to highlight service indicators.



**COIL
INTRO.**





Magstim has a large portfolio of TMS coils that come in various sizes and configurations, catering to different research and clinical needs, enabling professionals to explore a wide range of applications, from studying brain function to treating clinical disorders.

What makes Magstim coils so unique:

Magstim coils are known for precision and reliability in delivering targeted stimulation to specific regions of the brain. Magstim coils are renowned for their design, versatility and adaptability.

Some Magstim coils have been ergonomically designed with handheld controls to allow for ease use when treating patients.

Coil Configuration

Over the past 30 years, Magstim continues to expand its coil portfolio with the following TMS coil configurations:

- Figure of 8 Coils
- Circular Coils
- Double-Coned Coils
- Sham (Placebo) Coils
- Coated Coils (Flat & Branding Iron)

Magstim

Single 90mm Coils



Single 90mm Standard Coil

Part No. 3193-00

- Large circular magnetic field
- Simple current reversal by using alternative coil side

Ideal for:

Stimulating large areas, such as spinal roots

Users in the USA: The Magstim 90mm Coil is FDA 510(k) cleared for the stimulation of peripheral nerves. All other uses are considered investigational. In accordance with US federal regulations an IDE and/or IRB approval may be required.

Compatibility		
200 ²	BiStim ²	Rapid ²
✓	✓	✓



Single 90mm Remote Control Coil

Part No. 3192-00

- Large circular magnetic field
- Simple current reversal by using alternative coil side
- Control the stimulator output directly from the coil

Ideal for:

Stimulating large areas and motor conduction assesments

***Pulse triggering only with the Rapid² - Contact us for more information**

Users in the USA: The Magstim 90mm Coil is FDA 510(k) cleared for the stimulation of peripheral nerves. All other uses are considered investigational. In accordance with US federal regulations an IDE and/or IRB approval may be required.

Compatibility		
200 ²	BiStim ²	Rapid ²
✓	✓	✓*

Magstim Alpha Coils



Alpha (α) Flat Coil Range (Coated)

Part No.

D40 α - 4180-00 | D50 α - 4186-00 | D60 α - 4190-00 | D70 α - 4170-00

- Focal magnetic field between double coil windings
- Reduced coil size reduces spread and depth of magnetic field

Ideal for:

Different focalities and depths of stimulation

Users in the USA: CAUTION: Investigational device. Limited by Federal (or United States) Low to investigational use. In accordance with US federal regulations an IDE and/or IRB approval may be required

Compatibility		
200 ²	BiStim ²	Rapid ²
✓	✓	✓



Alpha (α) B.I. Coil Range (Coated)

Part No.

D25 B.I. - 5220-00 (Rapid² only) | D40 B.I. - 4179-00 | D50 B.I. - 4185-00
D60 B.I. - 4189-00 | D70 B.I. - 4510-00

- Focal magnetic field between double coil windings
- Reduced coil size reduces spread and depth of magnetic field
- Practical branding iron design for confined stimulation applications

Ideal for:

Different focalities and depths of stimulation, and for close proximity dual-site stimulation

Users in the USA: CAUTION: Investigational device. Limited by Federal (or United States) Low to investigational use. In accordance with US federal regulations an IDE and/or IRB approval may be required

Compatibility		
200 ²	BiStim ²	Rapid ²
✓	✓	✓

Magstim

Double 70mm Coils



D70 Alpha (α) Coil

Part No. 4150-00

- Focal magnetic field between double coil windings
- High use in published research
- **SHAM coil available (4334-00)** - SHAM only compatible with Rapid² and the Super Rapid²

Ideal for:

Blinded, sham-controlled studies

Users in the USA: CAUTION: Investigational device. Limited by Federal (or United States) Low to investigational use. In accordance with US federal regulations an IDE and/or IRB approval may be required

Compatibility		
200 ²	BiStim ²	Rapid ²
✓	✓	✓



D70mm Remote Control Coil

Part No. 3190-00

- Focal magnetic field between double coil windings
- Control the stimulator output directly from the coil

Ideal for:

Focal stimulation and motor threshold assessment on the 200² and BiStim² stimulators

***Pulse triggering only with the Rapid² - Contact us for more information**

Users in the USA: Magstim D70 Remote Coil is FDA 510(k) cleared for the stimulation of peripheral nerves. All other uses are considered investigational. In accordance with US federal regulations and IDE and/or IRB approval may be required.

Compatibility		
200 ²	BiStim ²	Rapid ²
✓	✓	✓*



D70 MT Remote Coil

Part No. 4949-00

- Focal magnetic field between double coil windings
- Control the stimulator output directly from the coil

Ideal for:

Motor threshold testing

***Single shot discharge only - Contact us for more information**

Users in the USA: Magstim D70 Remote Coil is FDA 510(k) cleared for the stimulation of peripheral nerves. All other uses are considered investigational. In accordance with US federal regulations and IDE and/or IRB approval may be required.

Compatibility		
200 ²	BiStim ²	Rapid ²
✓	✓	✓



D70² Coil

Part No. 4102-00

- Highly focal magnetic field
- Overlapped coil windings provide increased stimulation efficiency
- Reach motor threshold upto 25% less stimulator output
- Ergonomic Coil handle for increased user comfort

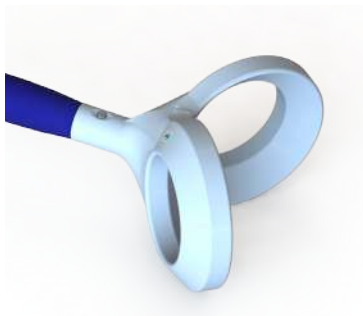
Ideal for:

Subjects with high motor thresholds

Users in the USA: Magstim D70 Remote Coil is FDA 510(k) cleared for the stimulation of peripheral nerves. All other uses are considered investigational. In accordance with US federal regulations and IDE and/or IRB approval may be required.

Compatibility		
200 ²	BiStim ²	Rapid ²
✓	✓	✓

MAGSTIM DOUBLE CONED COIL



110mm Double Cone Coil

Part No. 4610-00

- Provides deep magnetic stimulation
- 70% higher induced current in the central fissure⁺
- Widely used in published research for a range of deep stimulation applications

Ideal for:

Stimulating deep targets, such as the lower limb motor cortex regions

+ Compared to a 90mm circular coil

Users in the USA: CAUTION: Investigational device. Limited by Federal (or United States) Low to investigational use. In accordance with US federal regulations an IDE and/or IRB approval may be required

Compatibility		
200 ²	BiStim ²	Rapid ²
✓	✓	✓

MAGSTIM COOLING ASSISTED COILS



D70mm Air Film Coil (AFC)

Part No. 3910-00

- Focal magnetic field between double coil windings
- Powerful air cooling
- **SHAM** coil available (3950-00)
- Packages available

Ideal for:

Demanding protocols (e.g., theta burst stimulation) and blinded, sham-controlled studies

CAUTION: Users in the USA, the Magstim D70 Air Film Coil (AFC) is a stimulating coil intended for use with the Magstim Rapid² Stimulating Unit for the purpose of peripheral nerve stimulation and treatment of Major Depressive Disorder (MDD).

All other uses including the use of the D70 Air Film Coil (AFC) with the Super Rapid² Plus¹ are considered investigational. In accordance with US federal regulations an IDE and/or IRB approval may be required.

Compatibility		
200 ²	BiStim ²	Rapid ²
		✓

D70mm Air Film Coil & Cart Package

Part No. 5570-00

Package includes:

3910-00	Double 700mm Air Film Coil (AFC)
5290-00	Stimulator Cart
5392-00	Cart Mounted Arm

Compatibility		
200 ²	BiStim ²	Rapid ²
		✓

Air Film Coil (AFC) Package with SHAM

Part No. 5565-00

Package includes:

3950-00	D70mm Air Film Sham Coil
3910-00	Double 70mm Air Film Coil (AFC)
5290-00	Stimulator Cart
5392-00	Cart Mounted Arm

Compatibility		
200 ²	BiStim ²	Rapid ²
		✓

STIMULATOR COMPARISON GRID

3192-00 Single 90mm Remote	3193-00 Single 90mm Standard	3190-00 D70mm Remote	4180-00 D40 Alpha (flat)	4186-00 D50 Alpha (flat)	4190-00 D60 Alpha (flat)	4170-00 D70 Alpha (flat)	5220-00 D25 Alpha BI	4179-00 D40 Alpha BI	4185-00 D50 Alpha BI		
-	-	-	-	-	-	-	-	-	-	Active Cooling	Feature
✓ j	✓ j	✓ j	✓ j	✓ j	✓ j	✓ j	✓ j	✓ j	✓ j	Mounted	
-	-	-	-	-	-	-	-	-	-	Sham coil	
✓	✓	✓	✓	✓	✓	✓	✓	✓	✓	Handheld	
-	✓	✓	✓	✓	✓	✓	✓	✓	✓	Focal field	
-	-	-	-	-	-	-	-	-	-	Curved Coil	
i	PA	PA	PA	PA	PA	PA	i	i	i	Current Direction	
✓*	✓	✓*	✓	✓	✓	✓	✓	✓	✓	Rapid ²	System compatibility
✓	✓	✓	✓	✓	✓	✓	-	✓	✓	M200 ²	
✓	✓	✓	✓	✓	✓	✓	-	✓	✓	BiStim	
187	187	242	228	226	252	233	231	228	226	Peak E-field (V/m) at 20mm from coil surface	Rapid ² Pulse Characteristics ^a
22.45	22.45	22.89	27.45	25.97	30.89	26.77	39.21	27.45	25.97	Magnetic field gradient (kT/s) at coil surface	
1.41	1.41	1.17	1.46	1.45	1.6	1.45	1.81	1.46	1.45	Peak Magnetic Field (T) at coil surface	
422	422	344	362	374	343	359	317	362	374	Pulse width (µs) h	

^a Typical Values

^h Typical rise time values for monophasic pulses, and pulse widths for biphasic pulses.

* Remote function not compatible on the Rapid2 range.

4189-00 D60 Alpha BI	4510-00 D70 Alpha BI	4150-00 D70mm Alpha	4334-00 D70mm Alpha Sham	4949-00 D70mm MT Coil	4102-00 D70 ²	4610-00 D110mm Cone coil	3910-00 D70mm Air Film Coil	3950-00 AFC Sham		
-	-	-	-	-	-	-	✓	✓	Active Cooling	Feature
✓ j	✓ j	✓ j	✓ j	✓ j	✓ j	✓ j	✓	✓	Mounted	
-	-	-	✓	-	-	-	-	✓	Sham coil	
✓	✓	✓	✓	✓	✓	✓	-	-	Handheld	
✓	✓	✓	-	✓	✓	✓	✓	-	Focal field	
-	-	-	-	-	-	✓	-	-	Curved Coil	
i	i	PA	-	AP	PA	i	AP	-	Current Direction	
✓	✓	✓	✓	✓	✓	✓	✓	✓	Rapid ²	System compatibility
✓	✓	✓	✓	✓	✓	✓	-	-	M200 ²	
✓	✓	✓	✓	✓	✓	✓	-	-	BiStim	
252	233	265	2.23	222	307	409	255	1.72	Peak E-field (V/m) at 20mm from coil surface	Rapid ² Pulse Characteristics a
30.89	26.77	25.53	2.57	23.10	35.33	30.59	27.05	3.9	Magnetic field gradient (kT/s) at coil surface	
1.6	1.45	1.36	0.001	1.18	1.71	1.59	1.21	0.001	Peak Magnetic Field (T) at coil surface	
343	359	356	357	344	326	363	308	295	Pulse width (µs) h	

ⁱ Reversible current direction by changing orientation of the coil.

^j Mounting Possible only by use of the Super clamp with the cart mounted coil arm, See Compatible Accessories & Consumables Section for more details.

STIMULATOR COMPARISON GRID

3192-00 Single 90mm Remote	3193-00 Single 90mm Standard	3190-00 D70mm Remote	4180-00 D40 Alpha (flat)	4186-00 D50 Alpha (flat)	4190-00 D60 Alpha (flat)	4170-00 D70 Alpha (flat)	5220-00 D25 Alpha BI	4179-00 D40 Alpha BI	4185-00 D50 Alpha BI		
174	174	245	197	215	232	199	-	197	215	E-field (V/m) at 20mm from coil surface	M200 ² Pulse Characteristics a
38.21	38.21	40.82	46.1	44.34	51.29	45.16	-	46.1	44.34	Magnetic field gradient (kT/s) at coil surface	
2.42	2.42	2.11	2.53	2.54	2.79	2.51	-	2.53	2.54	Peak Magnetic Field (T) at 0mm	
106	106	86	92	96	89	93	-	92	96	Pulse width (μ s) h	
155	155	193	180	198	211	180	-	180	198	E-field at 20mm (V/m)	BiStim ² Pulse Characteristics a
34.34	34.34	34.90	41.47	39.52	46.32	40.79	-	41.47	39.52	Magnetic field gradient (kT/s) at 0mm	
2.82	2.82	2.44	3.02	2.99	3.27	2.99	-	3.02	2.99	Peak Magnetic Field (T) at 0mm	
146	146	119	126	131	120	124	-	126	131	Pulse width (μ s) h	

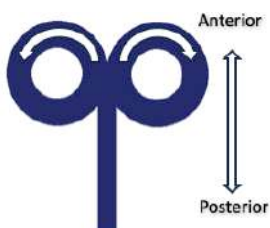
^a Typical Values

^h Typical rise time values for monophasic pulses, and pulse widths for biphasic pulses.

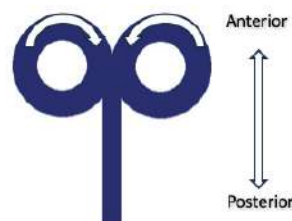
ⁱ Reversible current direction by changing orientation of the coil.

^j Mounting Possible only by use of the Super clamp with the cart mounted coil arm, See Compatible Accessories & Consumables Section for more details.

4189-00 D60 Alpha BI	4510-00 D70 Alpha BI	4150-00 D70mm Alpha	4334-00 D70mm Alpha Sham	4949-00 D70mm MT Coil	4102-00 D70 ²	4610-00 D110mm Cone coil	3910-00 D70mm Air Film Coil	3950-00 AFC Sham		
232	199	214	-	194	268	366	-	-	E-field (V/m) at 20mm from coil surface	M200 ² Pulse Characteristics a
51.29	45.16	42.86	-	38.64	59.19	51.24	-	-	Magnetic field gradient (kT/s) at coil surface	
2.79	2.51	2.34	-	2.03	2.93	2.7	-	-	Peak Magnetic Field (T) at 0mm	
89	93	88	-	89	84	89	-	-	Pulse width (μs) h	
211	180	192	-	174	242	329	-	-	E-field at 20mm (V/m)	BiStim ² Pulse Characteristics a
46.32	40.79	37.83	-	34.87	53.03	46.1	-	-	Magnetic field gradient (kT/s) at 0mm	
3.27	2.99	2.75	-	2.44	3.55	3.28	-	-	Peak Magnetic Field (T) at 0mm	
120	124	123	-	120	111	124	-	-	Pulse width (μs) h	



AP
Anterior Posterior current direction (With an assumed coil orientation)



PA
Posterior Anterior current direction (With an assumed coil orientation)

HORIZON COILS

Horizon coils feature an incredibly durable coil connector, tailored to the intense requirements of a clinical use environment

	Feature					System compatibility					
	Cooled	Mounted	Horizon adaptor Package (Sham) Compatible o	Handheld	Focal Field	Horizon Lite	Horizon Inspire	Horizon Performance	Horizon Performance with StimGuide	Horizon 3.0	Horizon 3.0 with StimGuide Pro
4980-00 Horizon AFC	✓	✓	✓	-	✓	✓	✓	-	-	-	-
4999-00 E-z Cool Coil	✓	✓	✓	-	✓	-	-	✓	-	-	-
5620-00-50 Horizon 3.0 E-z Cool Coil (Nav)	✓	✓	✓	-	✓	-	-	-	-	✓	✓
4990-00 MT Coil	-	-	-	✓	✓	✓	✓	✓	✓	✓	✓
6606-00 Horizon adaptor Package (Sham)	-	-	-	-	-	✓	✓	✓	✓	✓	✓
E-z Coil 5367-00	-	-	-	-	-	-	-	-	✓	-	-



Horizon AFC

Part No. 4980-00

This coil has a single air-cooling fan which provides impressive cooling abilities. The user can expect minimal cooling periods in between patients with this coil. With an impressive rate of change, the renowned D70mm Air Film coil is elevated to the Clinical environment with a durable coil connector. This coil has a huge diversity of applications, inducing an electric field of 130V/m (1.0 SMT k) at a depth of up to 4CM a at maximum machine output.

- Focal Magnetic field between double 70mm coil windings
- Compatible with the 6606-00 Horizon Adaptor (Sham).
- Intended to mount directly to the 5420-00 Stimulator Cart with Cart Mounted Coil Arm.



E-z Cool Coil

Part No. 4999-00 | 5367-00

With on-board fan speed control, the E-z Cool Coil optimises its performance to the demands of its environment, minimising noise and ensuring uninterrupted treatments. The user can expect to treat patients back-to-back in ambient temperatures of up to 30°C.

This coil has approvals for the treatment of Major depressive disorder (MDD), obsessive compulsive disorder (OCD), and Comorbid anxiety, with more being added in line with efficacy-based evidence and regulatory approvals. Inducing an electric field of 130V/m (1.0 SMT) at a depth of up to 3 cm.

- Focal Magnetic field between double 70mm coil windings.
- Compatible with the 6606-00 Horizon Adaptor (Sham).
- Intended to mount directly to the system cart.



Horizon 3.0 E-z Cool Coil (Nav)

Part No. 5620-00

With on-board fan speed control, the E-z Cool Coil optimises its performance to the demands of its environment, minimising noise and ensuring uninterrupted treatments. The user can expect to treat patients back-to-back in ambient temperatures of up to 30°C.

This coil has approvals for the treatment of Major depressive disorder (MDD), obsessive compulsive disorder (OCD), and Comorbid anxiety, with more being added in line with efficacy-based evidence and regulatory approvals. Inducing an electric field of 130V/m (1.0 SMT) at a depth of up to 3 cm.

- Supplied with IR Tracking Spheres and Posts for Navigation.
- Focal Magnetic field between double 70mm coil windings.
- Compatible with the 6606-00 Horizon Adaptor (Sham).
- Intended to mount directly to the system cart.



MT Coil

Part No. 4990-00

The Horizon MT Coil is the perfect tool to enable the user freedom of movement while undertaking a motor threshold assessment.

On coil controls featuring a system intensity display and controls for adjusting the stimulator output, applying a pulse, and disarming the system, the user can give the patient their full attention during a motor threshold assessment with no need to return to the system to make adjustments.

Physical buttons for adjusting the stimulator intensity mitigate the risk of accidental power increase which may be present in rotary wheel methods of adjustment.

- Handheld with ergonomic on coil controls.
- Non-cooled design intended for motor threshold assessments.



Horizon Adaptor Package (Sham)

Part No. 6606-00

Package includes the following:

6601-00 Horizon Adaptor (Standard)

6602-00 Horizon Adaptor (Sham)

Includes two adaptors, Standard and Sham, for use with compatible coils and system, enabling the use of a single coil for both standard (conventional or active) and sham stimulation.

Sham adaptor

The use of the sham adaptor alters the connected coils output to apply sham stimulation.

- No on-target stimulation
- No audible difference between standard and sham stimulation
- Provides similar tactile sensation.

Standard adaptor

The use of the standard adaptor does not alter the stimulation output of the connected coil. The adaptors are visually identical to one another except for the part number located on the product label.

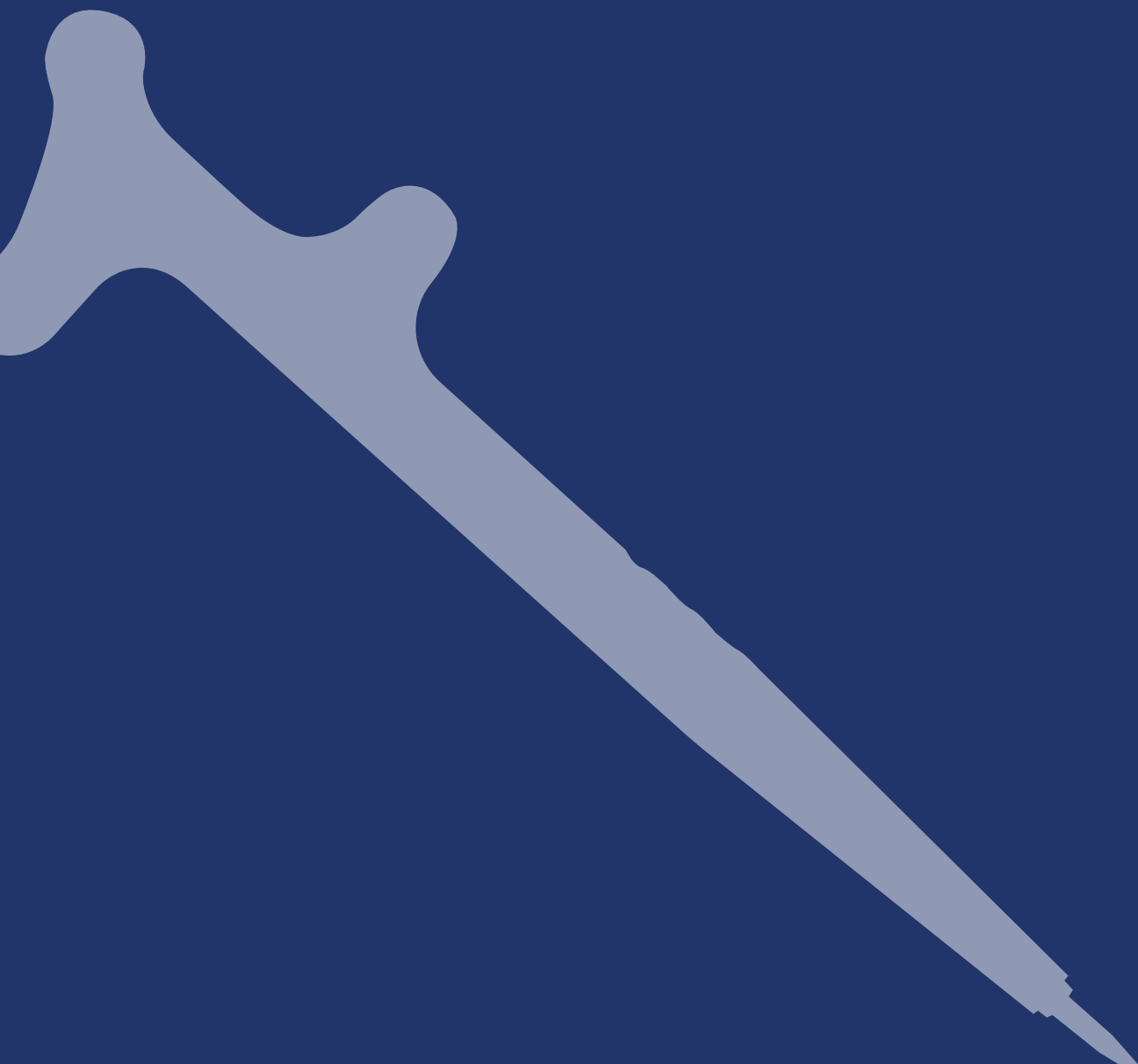
- Enables double blind study.

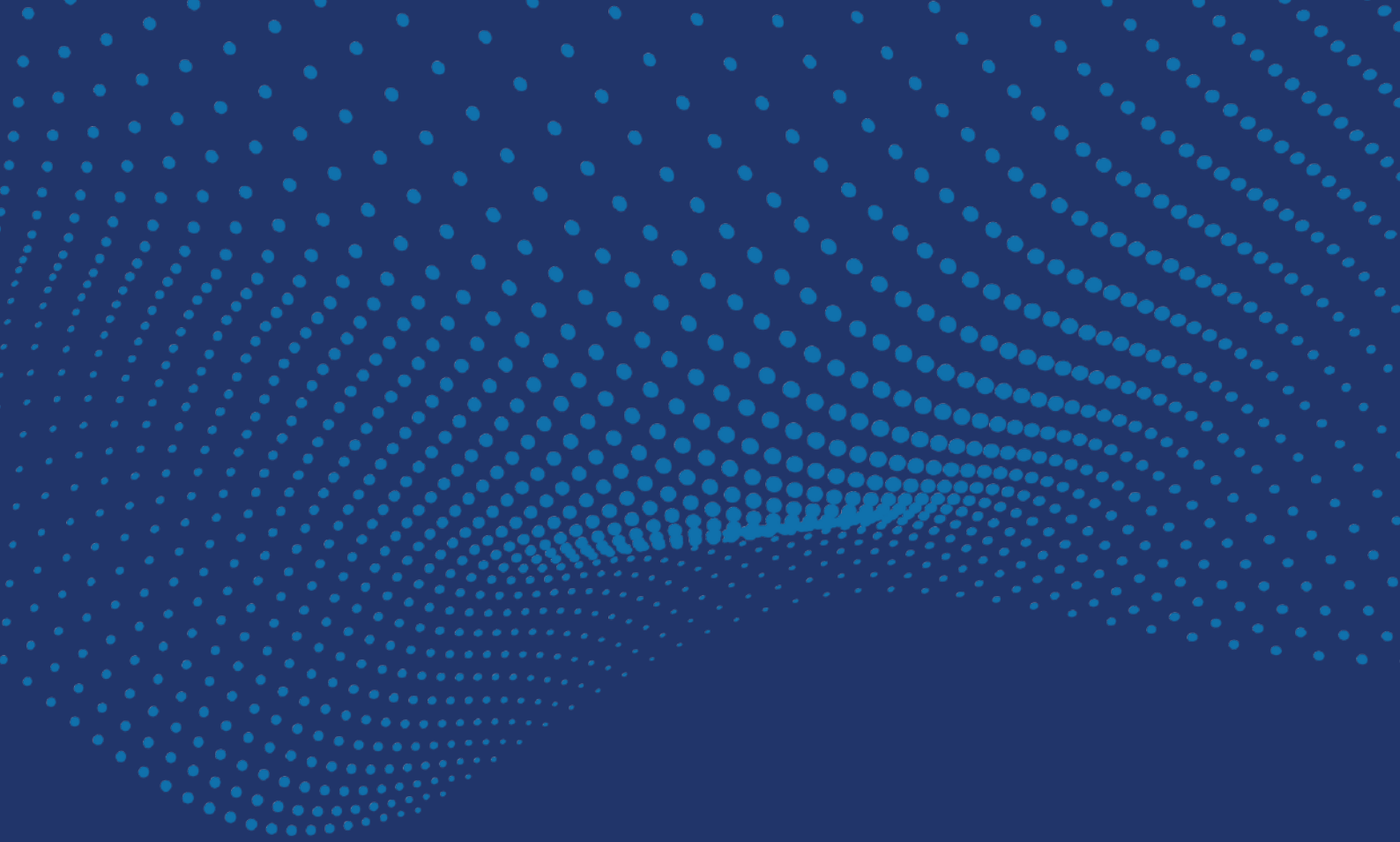
Users in the USA: CAUTION: Investigational device. Limited by Federal (or United States) Law to investigational use. In accordance with US federal regulations an IDE and/or IRB approval may be required.





**TMS
ACCESSORIES.**





Included in the Magstim product portfolio are accessories and consumables for TMS. Accessories and consumables are designed to be used only on Magstim TMS devices, products include:

- Navigation tracking tools
(spheres, remote pointer tools, tracking tools)
- Patient caps – available in various sizes
- Electrodes for MEP
- EMG measurements leads

ACCESSORIES

Part Number	Description
5770-00	TMS Patient Cap (Plain) - Small (54-56 cm) Pack of 10
5771-00	TMS Patient Cap (Plain) - Medium (56-58 cm) Pack of 10
5772-00	TMS Patient Cap (Plain) - Large (58-60 cm) Pack of 10
5773-00	TMS Patient Cap (Plain) - Extra Large (60-62 cm) Pack of 10
5018-00	Horizon AFC Cooling Module
4970-00	Magstim® AFC Cooling Module
9525-01	Foot Switch
280116	Treatment Chair
5420-00	Magstim® Stimulator Cart with Cart Mounted Coil Arm
5290-00	Magstim® Stimulator Cart (cart only)
5392-00	Magstim® Cart Mounted Coil Arm (for use with Cart 5290-00)
280030	Super Clamp
3901-00	EMG Interface Module (Magstim® Unit to EMG Unit)
3526-00	MEP Pod
550031	Covidien Electrodes (pk of 50)
550032	Ambu Blue Sensor Electrodes (pk of 25)
5797-00-00	Horizon 3.0 EMG Leads (box of 10)
NT-100	Reflective Spheres (qty25)
280336	Reflective Spheres (qty20) PRO only
NT-103	Head Reference Tool
5968-00	Head Reference Tool Horizon 3.0 with StimGuide Pro only
5369-16-00	Tracking Tool for MT Coil
5967-01	Tracking Tool for MT Coil Horizon 3.0 with StimGuide Pro only
NT-115	Pointer Tracking Tool
6438-00	Pointer Tracking Tool Horizon 3.0 with StimGuide Pro only
5293-00	Trigger Lead
5313-00	Horizon Performance coil arm (fisso arm)
5355-00	Transformer package (includes cables)
5963-10	StimGuide Pro Tracker tool pins
3020-00	M200 ² UI Controller
3021-00	Bistim ² UI Controller

Service

Part Number	Description
5453-00	Magstim Connect (monthly)
W-0400	HCI/EPV Service for TMS System Mainframe/Capacitor
W-0402	HCI/EPV Service for Coil





Our team of experts are here to support you.
Visit www.magstim.com to find out more

Note: Some products may not be available for purchase in your region due to regulatory and licensing approvals. Contact your local Magstim representative for assistance.



Magstim® Inc.
+1 844 624 7846
1626 Terrace Dr,
Roseville, MN 55113



The Magstim® Company Ltd.
+44 (0)1994 240798
Spring Gardens, Whitland,
Carmarthenshire, SA34 0HR

EC REP

Technomed Europe.

Amerikalaan 71
6199 AE Maastricht-Airport
The Netherlands

magstim.com

Four neurotechnology brands.
One shared mission.



welcony



UK
CA
0086

CE
2797

MIK2329-02